

YEAR

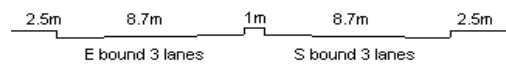
2014

LINK

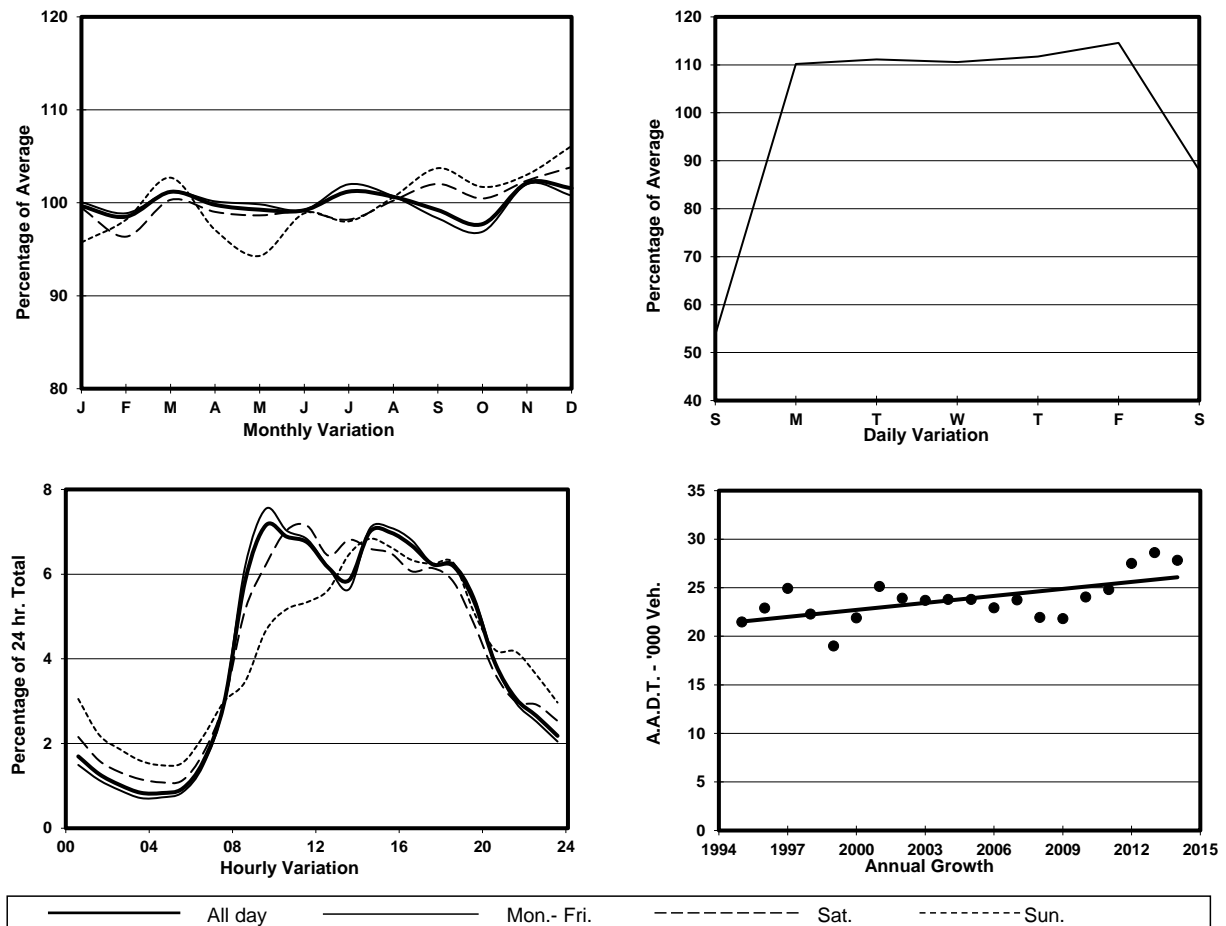
WAI YIP ST (from LAI YIP ST to HOI YUEN RD)

CORE STATION  
ROAD NETWORK  
ROAD TYPE

3020  
MAJOR  
DISTRICT DISTRIBUTOR



## 1. TRAFFIC FLOW VARIATION AND GROWTH



## 2. TRAFFIC CHARACTERISTICS (BY DIRECTION)

Parameter	All - Day	Mon. - Fri.	Sat.	Sun.
<b>EAST BOUND</b>				
A.A.D.T.	18660	21100	17330	11110
R 12 / 24 - %	74.9	75.9	73.3	68.1
R 16 / 24 - %	89.9	90.7	88.1	85.2
AM Peak Hour	0900-1000	0900-1000	0900-1000	0900-1000
One-way flow at AM peak hour	1410	1690	1120	560
T - % (AM)	-	-	-	-
PM Peak Hour	1600-1700	1600-1700	1700-1800	1800-1900
One-way flow at PM peak hour	1190	1360	1060	700
T - % (PM)	-	-	-	-
Prop.of commercial vehicles - 16 hr.	-	-	-	-
<b>WEST BOUND</b>				
A.A.D.T.	9160	10750	7810	4190
R 12 / 24 - %	74.2	75.5	72	60.7
R 16 / 24 - %	89.1	90.5	85.3	77.7
AM Peak Hour	0900-1000	0900-1000	0900-1000	0900-1000
One-way flow at AM peak hour	580	710	440	150
T - % (AM)	-	-	-	-
PM Peak Hour	1600-1700	1600-1700	1700-1800	1700-1800
One-way flow at PM peak hour	670	810	490	280
T - % (PM)	-	-	-	-
Prop.of commercial vehicles - 16 hr.	-	-	-	-

## 3. OTHER INFORMATION AND COMMENT